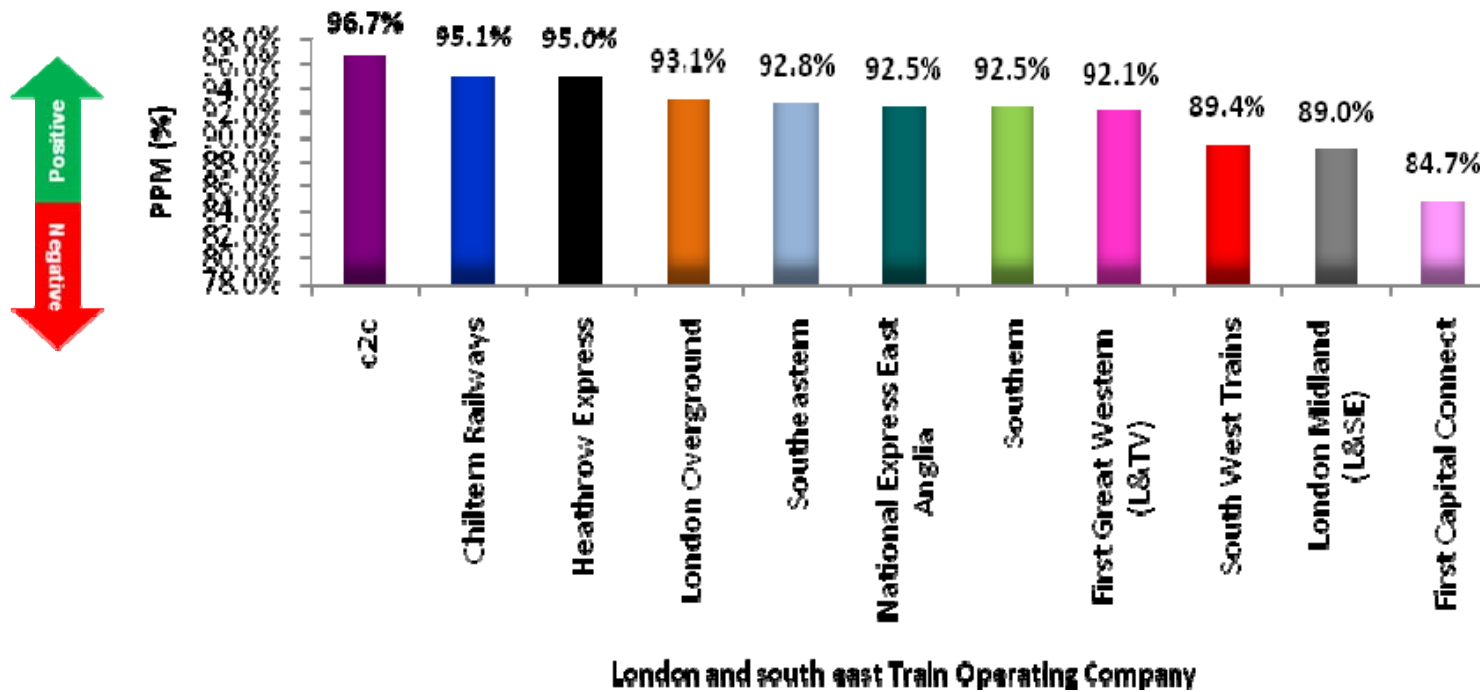


# London TravelWatch

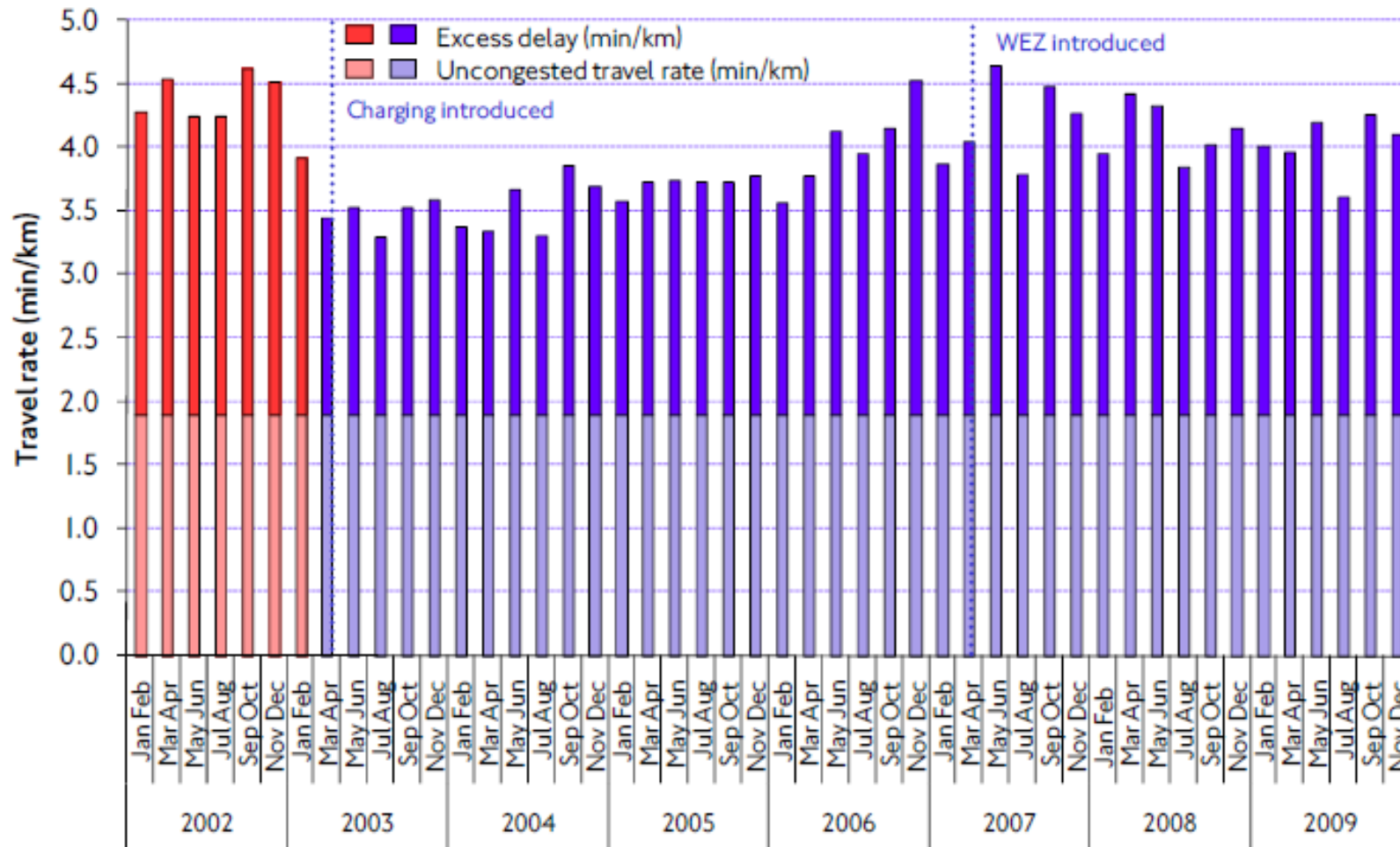
Rufus Impey –  
Senior Policy Officer

Transport Performance Q3  
2009/10

# National Rail Performance



# TfL Streets

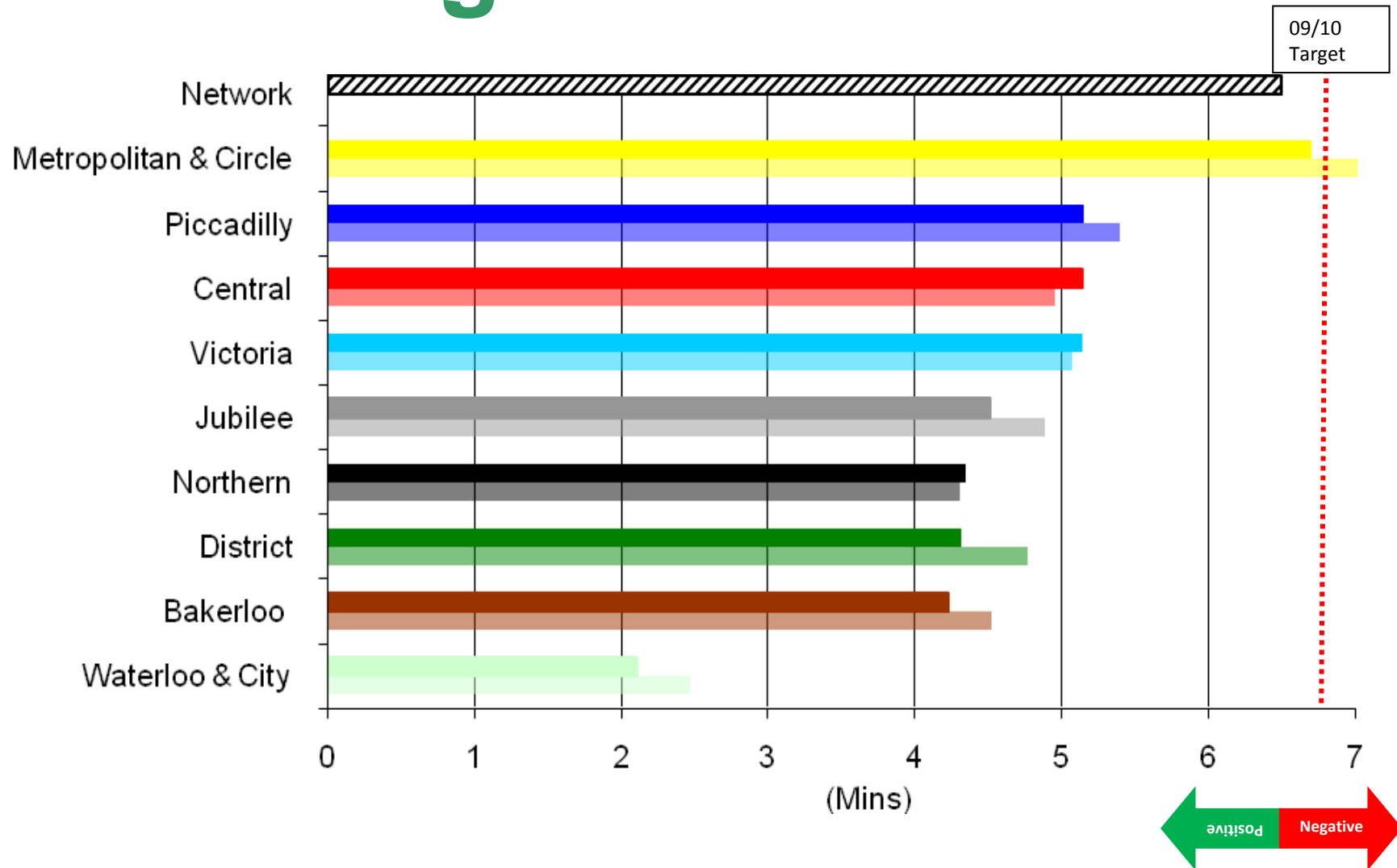


# Bus Performance

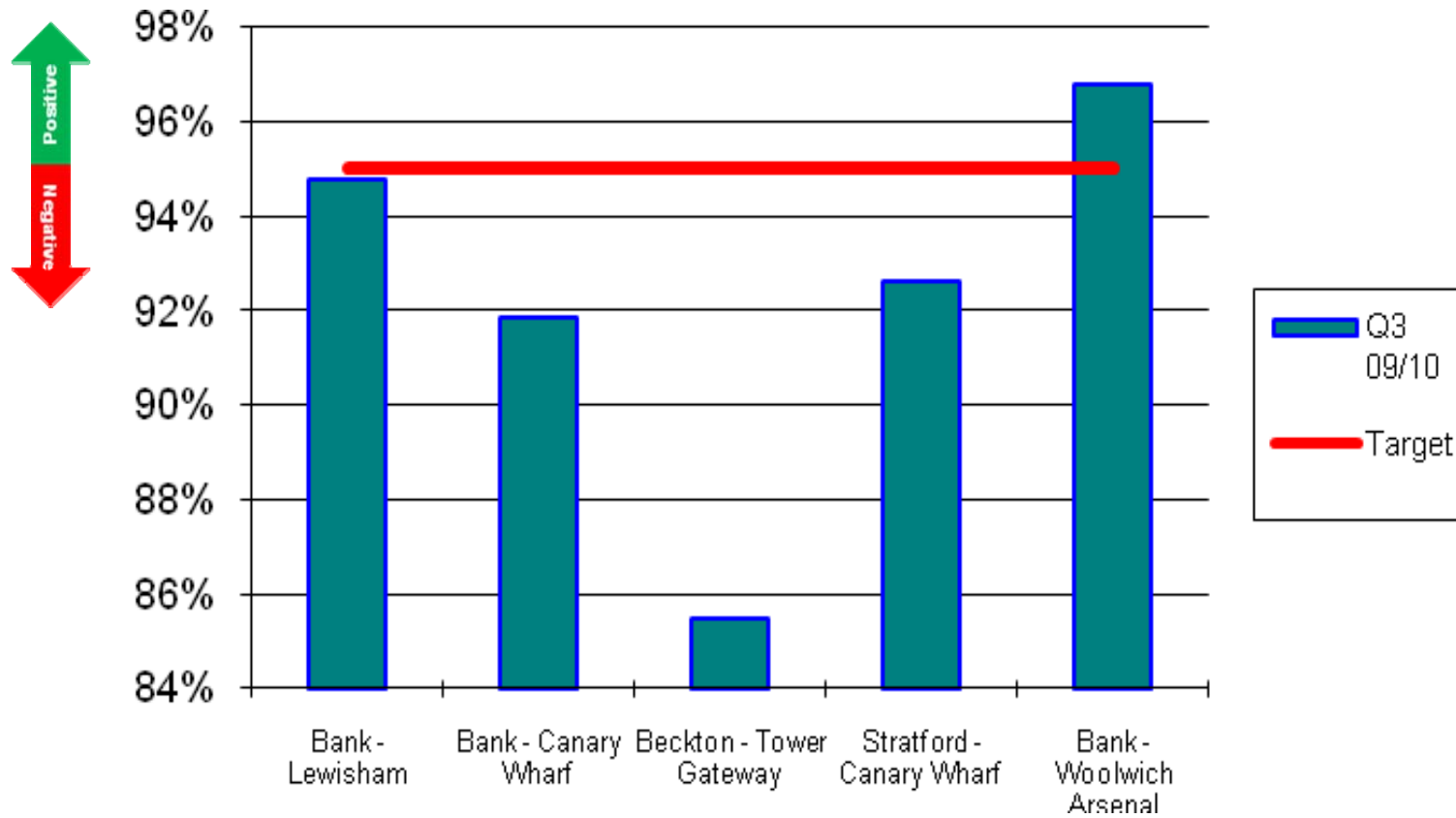


2009/10 Q4 Rank	2009/10 (Q3)	Route	Minimum Standard	Current Performance	Bus Route	% km operated	% km Lost to Traffic	Variance from Standard
1	(21)	262	0.70	1.65	Bus Station to Beckton	95.94%	3.25%	-0.95
2	(48)	152	1.10	1.88	Pollards Hill to New	93.85%	5.46%	-0.78
3	(23)	191	1.10	1.85	Brimsdown Station to Green	93.12%	6.11%	-0.75
4	(3)	228	1.10	1.83	Maida Hill to Park Royal	95.71%	3.78%	-0.73
5	(31)	452	1.10	1.64	Kensal Rise to	96.19%	3.25%	-0.54
6	(7)	30	1.70	2.17	Marble Arch to Hackney Wick	93.14%	5.83%	-0.47
7	(61)	343	1.10	1.55	New Cross Gate to Tower Bridge Road	95.27%	3.35%	-0.45
8	(35)	49	1.30	1.75	Clapham Jn to	95.92%	2.97%	-0.45
9	(66)	282	1.24	1.67	to Hospital	96.76%	2.59%	-0.42
10	(22)	220	1.50	1.90	Harlesden to Wandsworth	93.69%	5.14%	-0.40

# Underground



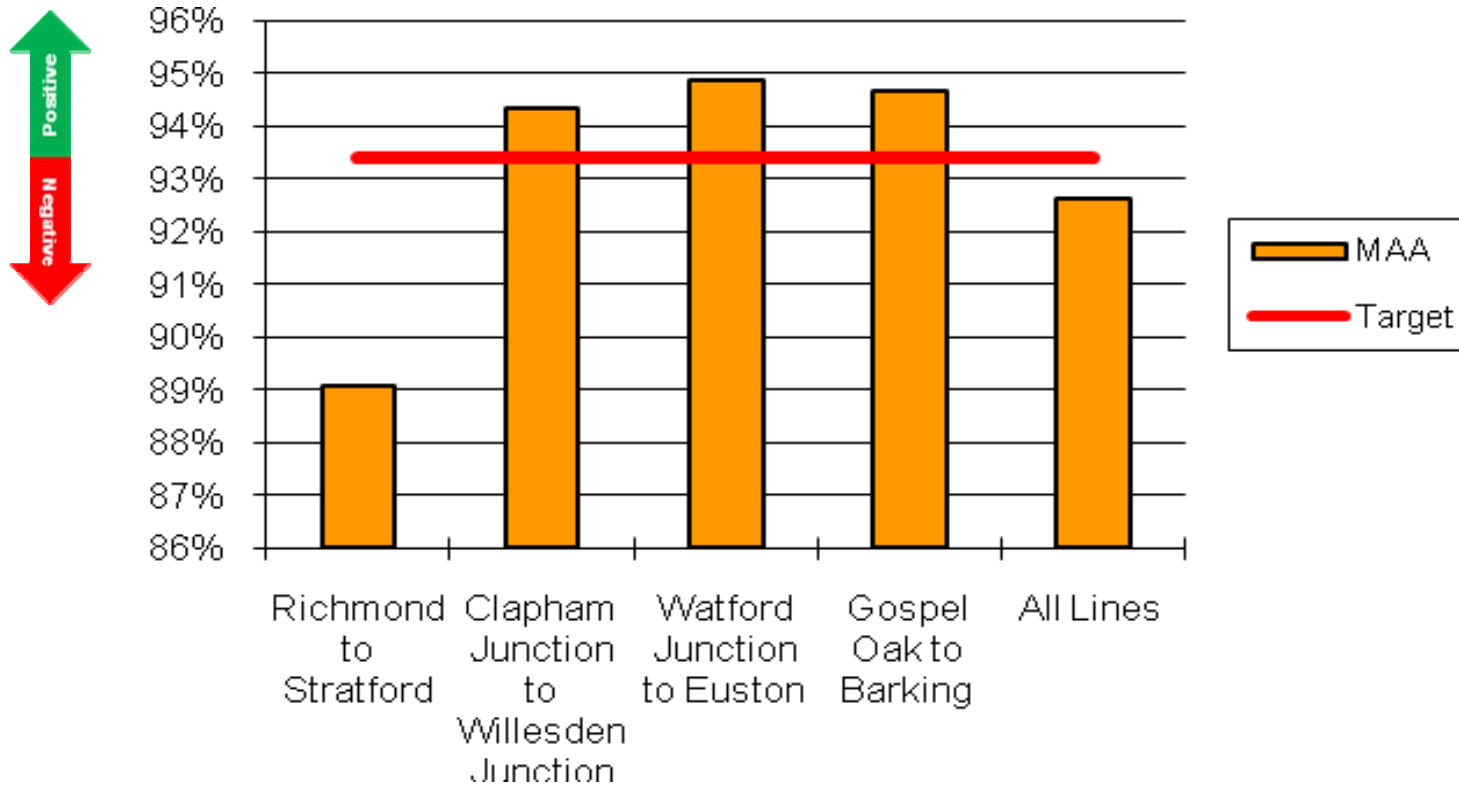
# DLR



# Tramlink



# London Overground





# Dial-a-ride

